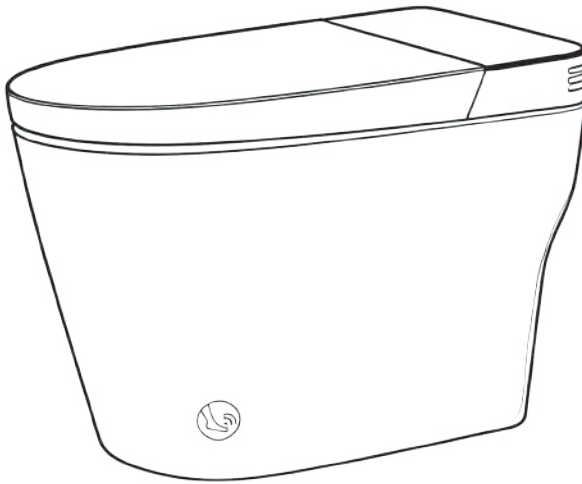


# User Manual



- Thank you for choosing our products. Please read the instructions carefully before installation and keep it available for future maintenance or reference.

Thank you for choosing our smart toilet. Please read this manual carefully and use it correctly.  
Please visit <http://www.czbidet.com> or scan the QR code below to register after sale service provided by manufacture, or buy the special bubble.



If you encounter any after-sales problems, please contact us immediately, and our customer service will reply within 24 hours to ensure you have worry-free after-sales service.

**Customer Service Mail: [czbidetservice@gmail.com](mailto:czbidetservice@gmail.com)**

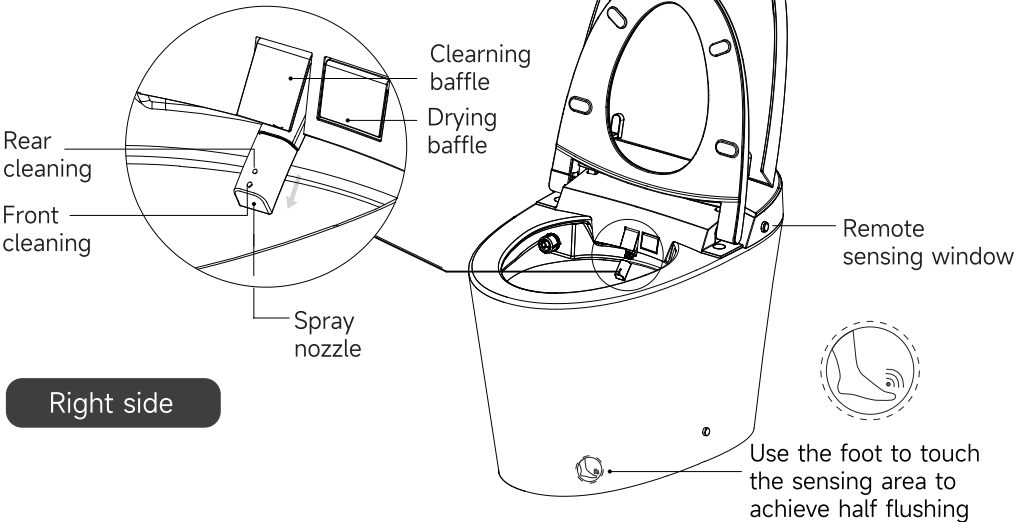
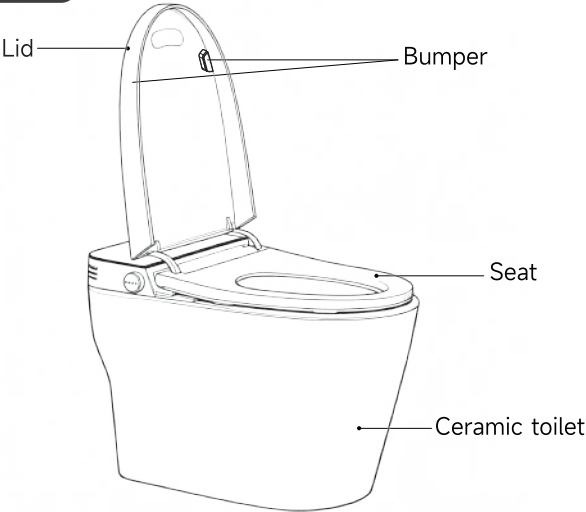
**Or contact us immediately (9am to 10pm Beijing time)**

**WhatsApp: +86 19108027760**



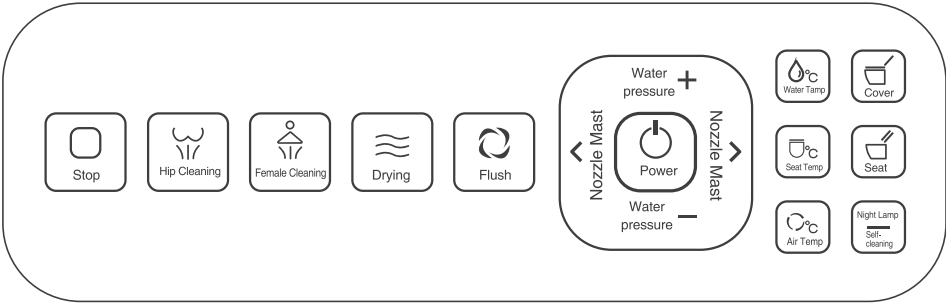
# Precaution Before Installing

Left side



Right side

# Remote Controller Introduction



**Stop**  
Cancels function of: Feminine cleaning, Posterior cleaning, Air-drying, etc.



**POSTERIOR CLEANING (BIDET)**  
Press once start hip cleaning, press **twice** to start oscillation, stop automatically after 1min.



**Female Cleaning**  
Press once to activate feminine cleaning, press **twice** to start moving feminine cleaning, stop automatically after 1min.



**DRYING**  
Press to start drying, feature will stop automatically after 3 mins



**Flush**  
Press once for full flushing. **Press and Hold:** Beeps once to turn off the off-seat automatic flushing; beeps twice to indicate the off-seat automatic flushing is on



**Power**  
Power to the unit **on/off**



**Nozzle Mast**  
Move forward (Spray nozzle position adjustment)during cleaning



**Nozzle Mast**  
Move backward(Spray nozzle position adjustment) during cleaning  
Long press to switch °C to °F



### Water pressure+

Increase the volume of water during cleaning



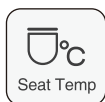
### Water Pressure-

Reduce the pressure of water during cleaning



### Water Temp

Adjust water temperature, 4 levels from off, 34°C , 37°C , 40°C in cycle.



### Seat Temp

Adjust seat temperature, 4 levels from off, 34°C, 37°C, 40°C in cycle.



### Air Temp

Adjust air temperature, 4 levels from off, 34°C, 37°C, 40°C in cycle.



### Cover

Press once to open toilet cover, press again to close cover.



### Seat

Press once to open toilet seat, press again to close toilet seat.



### Night Lamp / Self-Cleaning

#### WHEN SEATED

- Press once: Ambient lighting on/off
- Long Press: Add a foam shield
- The ambient lights and display screen will automatically turn off after five minutes of inactivity, and automatically turn on when someone approaches.

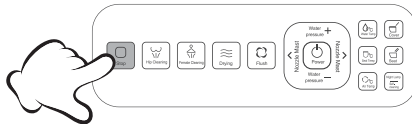
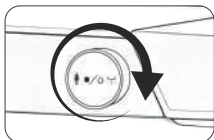
#### WHEN NOT SEATED

- Press once: Night light on/off
- Long press: Nozzle self cleaning

# Function Settings

**I. Remote control pairing:** Every time the remote control is pressed, the toilet will respond with a beep. If the light on the remote control is on, but the toilet does not respond with a beep, please pair the remote control and toilet first.

1. Rotate the side knob counter clockwise to the end and hold until hearing a beep.
2. Long press the Stop button on the remote to pair the remote with toilet.

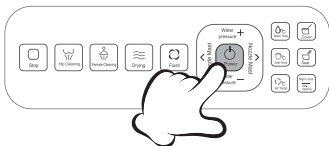


## II. Pre-wetting Function Setup

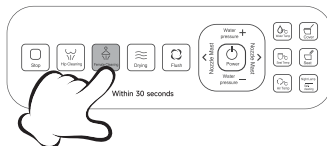
When you sit on the toilet seat, a small amount of water will flush automatically to wet the ceramic surface. This helps prevent stains and makes cleaning easier.

To enable or disable this function:

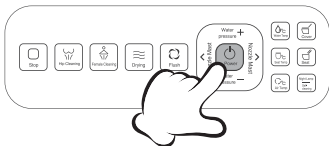
1. Press the **"POWER"** button (the display will turn off).



2. Within 30 seconds, press the **"Female Cleaning"** button on the remote.



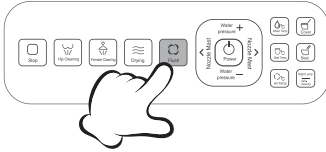
3. Press the **"POWER"** button again to save the setting.



- ▶ You will hear one beep if the function is turned off.
- ▶ You will hear two beeps if the function is turned on.
- ▶ Each press will switch the function between ON and off.

### III. Auto Flush After Leaving Toilet Seat

Long press the **“Flush”** button on the remote.

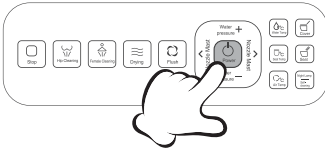


- ▶ 1 beep: Function OFF
- ▶ 2 beeps: Function ON

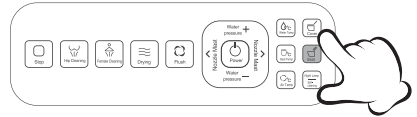
Each long press switches the function between ON and OFF.

#### IV. Auto Flush After Lid Closes

1. Press the **“POWER”** button (display turns off).



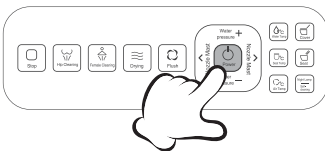
2. Press the **“Seat”** button on the remote



- ▶ 1 beep: Function OFF
- ▶ 2 beeps: Function ON

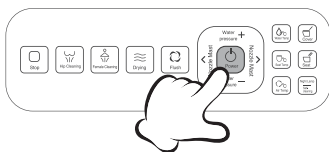
Each long press switches the function between ON and OFF.

3. Press **"POWER"** again to save.

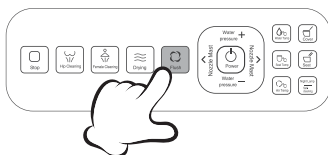


## V. Instant Lid Close and flush after leaving the Seat: When you leave the seat, the lid will automatically close in 5 seconds and flush. (Applicable to products of Batch 2511 and subsequent batches)

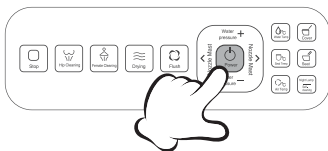
1.Press the **“POWER”** button (display turns off).



2.Long press the **“Flush”** button on the remote.



3.Press **“POWER”** again to save.



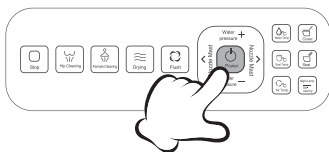
► 1 beep: Function OFF

► 2 beeps: Function ON

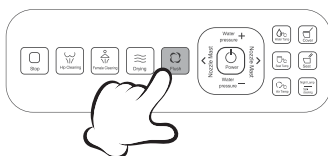
Each long press switches the function between ON and OFF.

## VI. Auto Foam Shield Function

1.Press the **“POWER”** button (display turns off).



2.Long press the **“Flush”** button



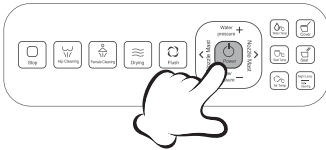
► 1 beep: Function OFF

► 2 beeps: Function ON

Each long press switches the function between ON and OFF.

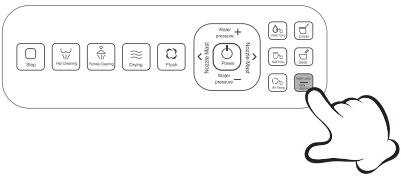


3.Press “**POWER**” again to save.



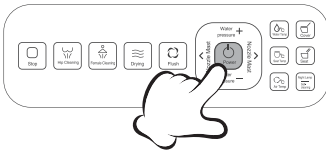
**To Add Foam Manually:**

While seated, long press the “**Night Lamp / Self-Cleaning**” button on the remote.

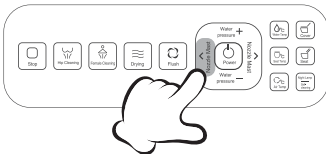


**VII. Adjust Lid Opening Force: When the toilet lid and seat cannot be fully opened or there is insufficient force.**

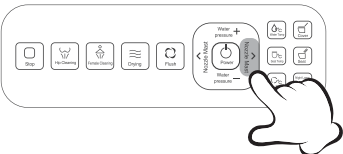
1.Press the “**POWER**” button (display turns off).



2.Press “**Nozzle Mast <**” to decrease opening force (0–14).

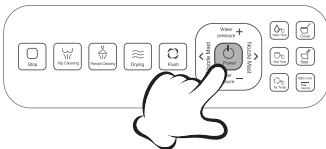


Press “**Nozzle Mast >**” to increase opening force (0–14).



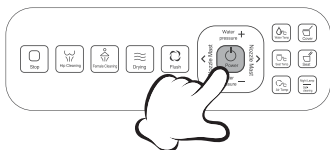
Recommended: 9–13

3.Press “**POWER**” again to save.

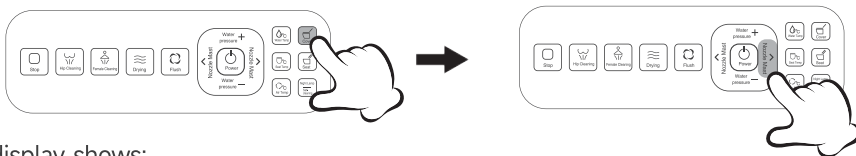


## VIII. Adjust Lid Sensing Distance

1. Press the “**POWER**” button (display turns off).



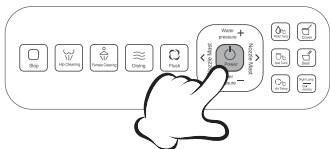
2. Press “**Cover**”, then press “**Nozzle Mast >**” to set distance:



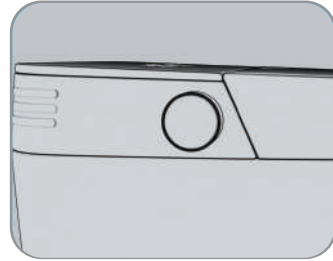
LED display shows:

- U0: Auto opening disabled
- U1-U5: 0.6 ft – 3 ft

3. Press “**POWER**” again to save.



# Introduction to Toilet Button Functions



## When in seat

- Rotate counterclockwise to the end:  
Start feminine wash. Duration of 90 seconds, then after 5 seconds, start flush start drying
- Rotate clockwise to the end:  
Start posterior (bidet) wash for 1 minute, then then after 5 second start flush and drying
- Press once:  
flush and initiate drying

## When off seat

- Press once      Flush
- Press and Hold      Power outage flush
- To Pair Remote:

Rotate clockwise to the end and hold until you hear a beep.

Long press the stop on the remote to pair with the remote and smart toilet

\*The remote is pre-paired when it leaves the factory. If the remote doesn't work after installing batteries or if you have a new remote, you will need to pair it again.

# Voice Command

Use “hello toilet” to wake up voice function (requires model support)

Within 30 seconds after activation, there is no need to wake up again providing you speak commands continuously. You will need to activate it again using “hello toilet” again 30 seconds

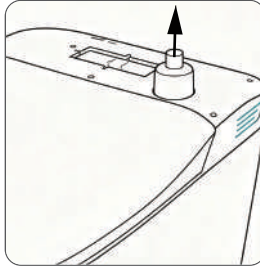
| VOICE FUCTION OF TOILET |  |  |
|-------------------------|--|--|
|                         | Voice Command                          | Function Description                         |
| 1                       | Hello Toilet                           | “Wake Up” The Toilet                         |
| 2                       | Open /close The Lid                    | Open /close The Lid                          |
| 3                       | Open /close The Seat                   | Open /close The Seat                         |
| 4                       | Full Flush                             | Full Flush                                   |
| 5                       | Start / Close Cleaning                 | Start / Stop bidet                           |
| 6                       | Start/ Close Drying                    | Start/ Stop Drying                           |
| 7                       | Switch On/ Off The Power               | Turn On / Off The Power                      |
| 8                       | Turn On/ Off The Night Light           | Turn On/ Off The Night Light                 |
| 9                       | Increase/ Reduce The Water Temperature | Increase/ Reduce The bidet Water Temperature |
| 10                      | Increase/ Reduce The Seat Temperature  | Increase/ Reduce The Seat Temperature        |
| 11                      | Increase/reduce The Air Temperature    | Increase/reduce The Drying Wind Temperature  |
| 12                      | Increase/reduce The Water Pressure     | Increase/reduce The Cleaning Water Pressure  |
| 13                      | Front Clean                            | Start feminine Cleaning                      |
| 14                      | Clean The Nozzle                       | Start Clean The Nozzle (Self-clean)          |
| 15                      | Move Clean                             | Start Moving Clean Mode                      |
| 16                      | Turn Up/ Down The Volume               | Increase / Decrease The Volume               |
| 17                      | Open/ Close The Bubble                 | Start / Stop A Foam Shield                   |

# Add Foam Tablet

When the foam is less/no foam, the foam tablet is used up. You need to add foam tablets (available at [www.czbidet.com](http://www.czbidet.com)). The method of adding foam tablets is as follows:



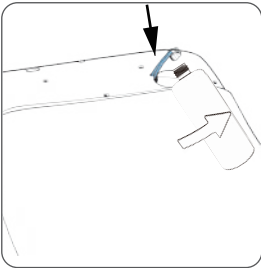
**1**  
Open the back cover



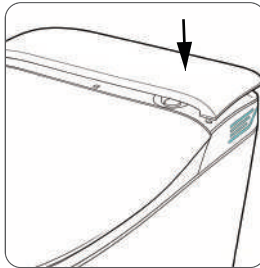
**2**  
Take out the foam bottle



**3**  
Unscrew foam bottle and  
add foam tablet



**4**  
Tighten the cover and  
place the foam bottle into  
the hole. Be careful not to  
fold the foam tube to  
avoid foam failure



**5**  
Cover the back cover

# Trouble Shooting

## 1.Voice Function

Use "Hello toilet" to Wake up voice function, after it says "I am Here", you say "Open the Voice" This can turn on the voice identification, And then you can use voice commands.

Please attention that within 30 seconds after waking up, there is no need to wake up again. You can speak commands continuously, but you need to wake up again after 30 seconds This can turn on the voice identification, And then you can use voice commands.

## 2.Remote Controller Doesn't Work

a: check if the battery is installed or if the battery is dead.

b: when you press the remote button, the indicator lights but the toilet doesn't respond. It is possible that remote hasn't paired with the toilet. Here is pairing method.

Rotate the side knob clockwise until hear a beep sound, then immediately long press the stop button

c: Only Flush button works and the seat icon on the display is flashing, due to water on the seat sensor, the toilet detected that someone was using it. You just need to wipe the water with towel or paper.

## 3. When You Sit on The Toilet, It Will Flush Automatically. This Is Pre-Wetting Function You Can Turn It On/Off

First, Press the "POWER" button in the startup state to enter the setting mode. At this time, the screen will not display.

Then, Press the button Female Cleaning on the remote, 1 beep to turn off, 2 beeps to turn on.

Last, the "POWER" button again to successfully set it up

## 4. Auto Flush

a:Auto flush after leaving seat.

Long press the Flush button : The buzzer sounds once to turn off the off-seat auto flushing, sounds twice to turn on.

b: Auto flush after the cover closing

First, Press the "POWER" button to enter the setting mode. At this time, the screen will not display.

Then, Press the button Seat on the remote, 1 beep to turn off, 2 beeps to turn on.

Last, Press the "POWER" button again to successfully set it up.

## 5. Foam Doesn't Come Out.

a: For the first time use:

It is possible that the foam tablets haven't dissolved fully and the water in the foam bottle doesn't meet the middle level. You can try the foam function for a few more times and the foam will come out

b: After a period of use:

Check the color of water in the bottle, if the color becomes lighter, and you need to add 2-3 pieces foam tablets into the bottle.

c: The foam transparent tube is bent during installation. You need to adjust the bottle position.

d: Check if the auto foam shield function is turned off

Turn on/off Auto Foam Shield

First, Press the "POWER" button to enter the setting mode. At this time, the screen will not display.

Then, Long press the Flush button on the remote, 1 beep to turn off, 2 beeps to turn on.

Last, Press the "POWER" button again to successfully set it up.

## 6. The Toilet Lid Can Not Open Fully. At This Time, You Need to Adjust the Opening Force of Lid to 13 or 14.

First, Press the "POWER" button enter the setting mode. At this time, the screen will not display.

Then, Adjust the opening force of the lid: Press Nozzle Mast < button to decrease the cover opening speed, choosing between 0-14. Press Nozzle Mast > button to increase the seat opening force. Choose between 0-14.(9-13 is best)

Last, press the "POWER" button again to successfully set it up

**7. When You Approach, the Toilet Will Open Automatically. For Example, When You Walk Into the Bathroom, the Toilet Opens the Cover Automatically. At This Time, You Can Adjust the Radar Sensing Distance. If You Don't Want the Toilet Open Automatically, You Can Adjust the Sensing Distance to U0.**

First, Press the "POWER" button enter the setting mode. At this time, the screen will not display.

Then, Adjust the sensing distance of the lid: Press "Cover", then press "Nozzle Mast >" (Close to "Seat Temp" button) to adjust the distance for opening cover.  
(U0→auto opening disabled, U1-U5→0.6ft-3 ft)

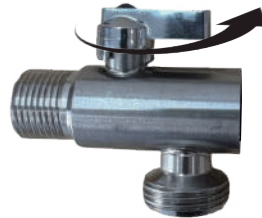
Last, press the "POWER" button again to successfully set it up

## **8. When Flushing, the Water Sprays Out of the Toilet Bowl.**

a, Adjust the direction of the outlet nozzle

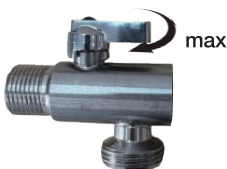


b, Adjust the angle valve to reduce the water pressure



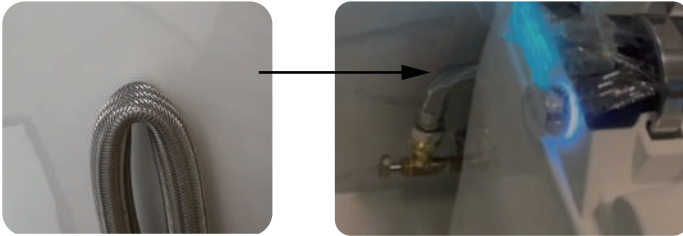
## **9. Weak Flush**

- The angle valve is not fully open, please adjust it to max





- Check whether the pipe is bent

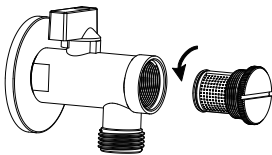


- Program issue, you can unplug the power cord and wait for 3 minutes and then plug it back in.
- Water pressure is not enough. Please check water pressure in your home.
- If the pipeline is blocked, the filter screen of the angle valve needs to be cleaned, and the pulse valve needs to be cleaned.

#### Maintenance of filter net

Time for maintenance: It is under normal water pressure but poor flush performance occurs

1. Turn off power and the angle valve



2. Unscrew angle valve nut
3. Remove filter net



4. Use the brush to clean filter net
  5. Reinstall filter net and angle valve nut
  6. Turn on the angle valve and connect power, then it can work normally after self inspection.
- Pour a bucket of water about 6 liters into the toilet and observe if it has the siphon effect. If not, it is possible that the toilet drain pipe is clogged, you can use a tool to unclog it.